

# Searching Video based on Text Exception events Generated by Alarm or POS sources

To use this method of search, your recorder must be configured with a compatible text exception source generator. These may include compatible POS terminals, Alarm Panels, Vape Detection units, or Optimum Face Recognition add-ons. There is video tutorial using a POS example available at [www.freedomvms.com/textsearch](http://www.freedomvms.com/textsearch)

## Methods of searching text data in Freedom VMS:

1. Using the Advanced Search → Text Search window from the Playback GUI.
2. Performing a filtered T.O.E (Text Overlay Exception) search on the Playback timeline'.
3. Using the 'File List' method to browse 'Text Exceptions' event files

## Search text using the Text Search Window

**1** Select your text source

**2** Select your text source

**3** Select your text source

**4** Select date

**5** Select Recorder/s

**6** Enter search terms. For larger length items use the 'Edit Keys' & add the Key words

**7** Advance offset value

**8** Results appear here, Double click to play associated video

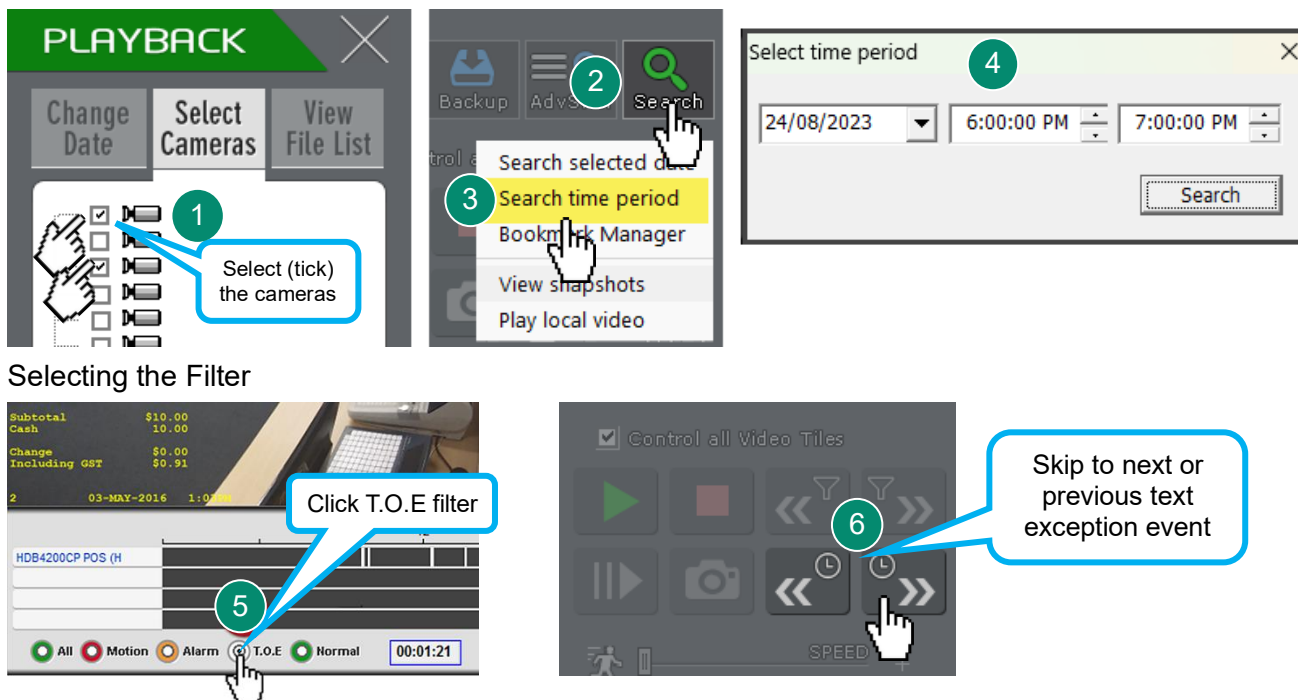
Right click to expose more details. (only available on some interfaces)

Fig1.0

Camera	TransID	Content	Time
Register 183	018382	John Smith Results appear here.....	xxxxxxxxxxxxxx

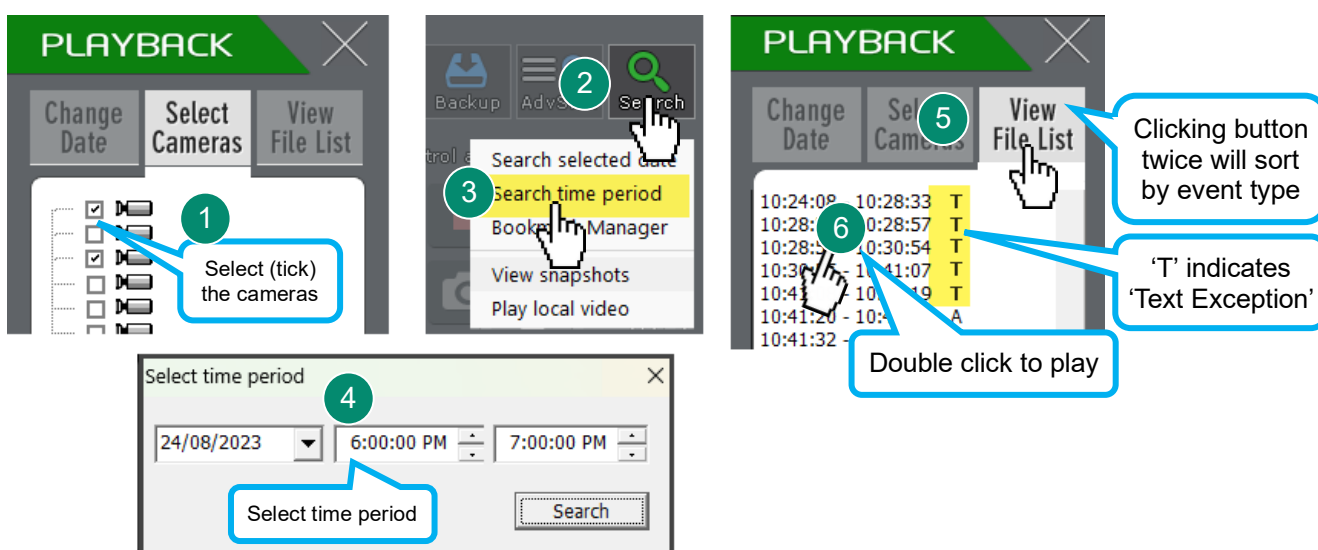
## Performing a filtered T.O.E Search

T.O.E (Text Overlay Exceptions) are text exceptions that have been predefined and configured on the Freedom Server recorder. When text matching the text search criteria are encountered, the footage is marked as a 'Text exception' event and is represented in the playback timeline as white coloured marker. To perform a filtered search, navigate to the Playback Window and follow the steps below.



## Performing a 'File List' Search

As with the previous 'filtered' T.O.E search, this search method assumes you have configured predefined 'Text Exceptions' on the Freedom Server recorder.



## Keyword Search Usage

Boolean AND and OR are supported as well as multi word/number phrases

Logical AND = '+', Logical OR = **SINGLE SPACE**, Phase = text enclosed in **2 double quotes** "xxx xxx"

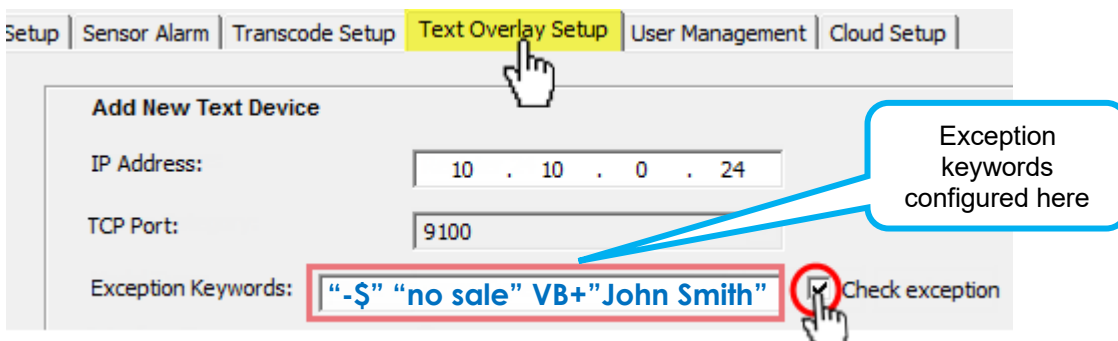
Example / Criteria	You would enter
I want to search transactions that contain either the phrase 'no sale' OR 'John Smith' <b>Note:</b> there is 1 space between both phrases	"no sale" "John Smith"
I want to search transactions that must contain both 'John Smith' AND '-\$' OR any transactions containing 'no sale'	"John Smith"+-\$ "no sale"
I want to search transactions that must contain both 'Big Ben' AND '-\$' OR 'Sam Citizen' AND 'Item ID'	"Big Ben"+-\$ "Sam Citizen"+"Item ID"

**no+sale** will match any transaction with 'no' and 'sale', but the 2 words may not necessarily follow one another and may be on separate lines.

**"no sale"** looks for the entire phrase, one word/value after the other.

## Freedom Server Recorder 'Text Exception' Setup

For automated flagging of 'Text Exception' events you must configure 'Exception keywords' in the Freedom Server 'Text Overlay Setup' window. On the Freedom Server navigate to **Setup** → **Text Overlay Setup**.



## Text Overlay Playback options

When playing back video, you have a few options on how the text is overlaid on the video image, including Font Size, Type, Colour and Position or whether to hide all overlaid text all together.

The image shows a video playback interface with a menu and a settings dialog. The video shows a scene with a green dumpster and a black metal structure. The menu is open, showing options like 'Synchronize with this camera', 'Close', 'Close All', 'Picture Size', 'Hide POS data', 'Set POS Font', 'Reset Digital Zoom', and 'Stream Quality'. A blue arrow points from the 'Set POS Font' option to a settings dialog box titled 'Set text style for camera HDBW2200RP-Z(HDBW2200RP-Z)'. The dialog box has fields for 'Font Size' (14), 'Font Type' (Courier New), 'Font Color' (Yellow), and 'Font Bold' (checked). It also has a 'Text position' section with 'X' (16) and 'Y' (50) fields, and a 'Buffering time' field (3). At the bottom, there is a checkbox labeled 'Use recorded POS text set' which is currently checked. A blue callout box points to this checkbox with the text 'Untick to modify'. Another blue callout box points to the 'Set POS Font' option in the menu with the text 'White on the timeline indicates a 'Text Exception' event'.

White on the timeline indicates a 'Text Exception' event

Untick to modify